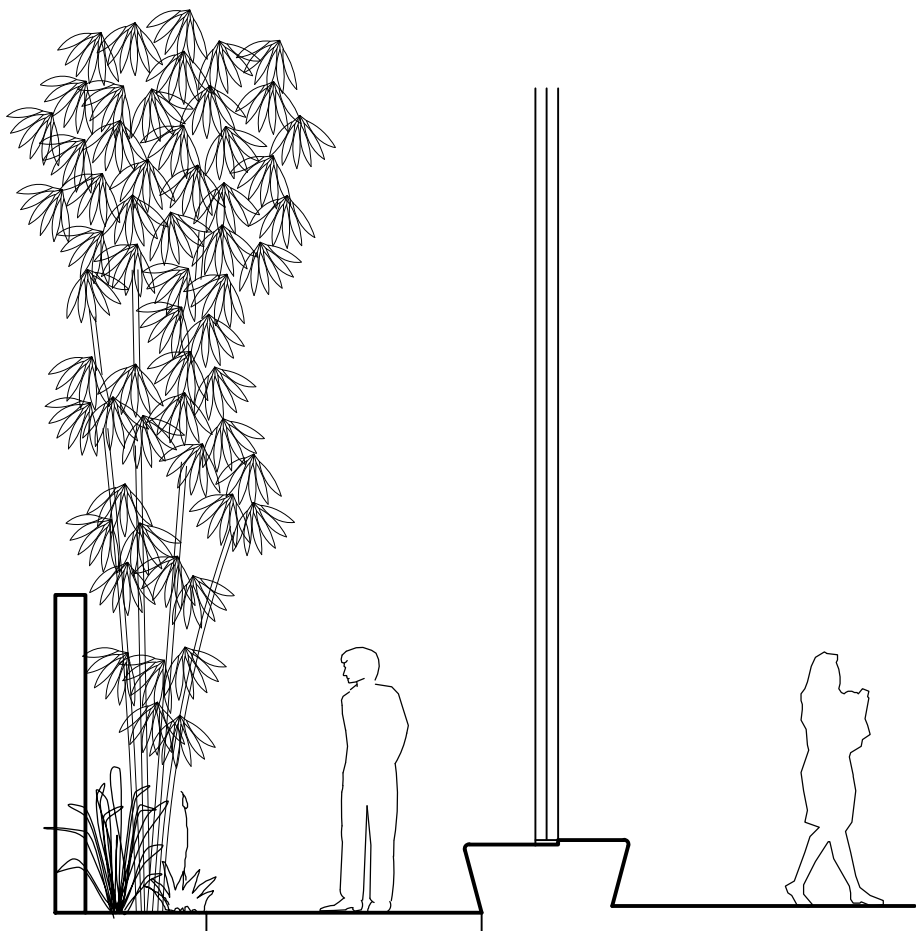


01 LANDSCAPE PLAN
1:200



02 SECTION 01
1:50

Botanic Name	Common Name	Mature Size	Installation size	Spacing
SHADE PLANTING MIX				
Arthropodium cirratum	NZ Rock Lily	0.8 x 0.8	200mm	600mm
Aspidistra elatior	Cast Iron Plant	0.7 x 0.5	150mm	400mm
Asplenium australasicum	Bird's Nest Fern	1 x 1	200mm	800mm
Blechnum 'Silver Lady'	Silver Lady	1 x 1	200mm	800mm
Clivia miniata	Clivia	0.4 x 0.5	150mm	400mm
Dichondra repens	Kidney Weed	0.15 x 1	150mm	400mm
Lomandra longifolia 'Tanika'	Fine Mat Rush	0.6 x 0.6	75mm tube	400mm
Macrozamia communis	Burrawang	1 x 1.2	300mm	800mm
Myoporum parvifolium	Creeping Boobialla	0.2 x 1.5	200mm	600mm
Philodendron 'Xanadu'	Xanadu	0.8 x 1	200mm	700mm
Viola hederaceae	Native Violet	0.15 x 0.15	150mm	300mm
SUN PLANTING MIX				
Acacia cognata 'Limelight'	Bower Wattle	1 x 1	200mm	700mm
Dianella caerulea 'Little Jess'	Little Jess Flax Lily	0.4 x 0.4	75mm tube	300mm
Lomandra longifolia 'Tanika'	Fine Mat Rush	0.6 x 0.6	75mm tube	400mm
Myoporum parvifolium	Creeping Boobialla	0.2 x 1.5	200mm	600mm
Poa labillardierei 'Eskdale'	Tussock Grass	0.6 x 0.5	75mm tube	400mm
Poa poiformis 'Kingsdale'	Blue Coastal Tussock Grass	0.45 x 0.45	75mm tube	400mm
Rhagodia spinescens 'Aussie Flat Bush'	Saltbush	0.4 x 1	200mm	600mm
Westringia fruticosa 'Grey Box'	Grey Box Coastal Rosemary	0.4 x 0.4	200mm	400mm
UNDERSTOREY PLANTING MIX				
Dichondra repens	Kidney Weed	0.15 x 1	150mm	400mm
Dianella caerulea 'Little Jess'	Little Jess Flax Lily	0.4 x 0.4	75mm tube	300mm
Casuarina glauca 'Cousin It'	Cousin It Swamp Oak	0.1 x 1	200mm	600mm
Myoporum parvifolium	Creeping Boobialla	0.2 x 1.5	200mm	600mm
Viola hederaceae	Native Violet	0.15 x 0.15	150mm	300mm

Code	Botanic Name	Common Name	Mature Size	Installation size	Spacing	Quantity
TREES						
AP	Acer palmatum 'Seiryu'	Japanese Maple	4 x 4	100L	As shown	1
BC	Buckinghamia celsissima	Ivory Curl Flower	7 x 3	100L	As shown	1
ER	Elaeocarpus reticulatus	Blueberry Ash	10 x 4	100L	As shown	1
LI	Lagerstroemia indica 'Sioux'	Pink Crepe Myrtle	4-5 x 3-4	100L	As shown	2
TL	Tristaniopsis laurina 'Luscious'	Water Gum	8 x 5	100L	As shown	2
WF	Waterhousia floribunda 'Green Avenue'	Weeping Lilly Pilly	10-15 x 7	100L	As shown	2
LARGE SHRUBS / FEATURE PLANTING						
AS	Acmena smithii 'Hot Flush'	Hot Flush Lilly Pilly	3 x 2	200mm	As shown	2
AC	Alpinia caerulea	Native Ginger	1.5 x 1	200mm	1000mm	15
BT	Bambusa textilis 'Gracilis'	Slender Weavers Clumping Bamboo	6 x 1.2	35L	1000mm	19
CV	Callistemon viminalis 'Slim'	Slim Bottlebrush	3 x 1.3	200mm	1000mm	48

GROUND PREPARATION

SHRUB AND GROUND COVER PLANTING:
EXCAVATE MINIMUM 300mm BELOW FINISHED SURFACE LEVEL AND RIP SUBGRADE TO 150mm INCORPORATING ADDITIVES AS REQUIRED. BACKFILL WITH 300mm DEPTH TOPSOIL. TOP PLANTING AREAS WITH 75mm DEPTH MULCH.

TREE AND LARGE SHRUB PLANTING:
EXCAVATE MINIMUM 150mm BELOW ROOTBALL OF PLANT TO BE INSTALLED. RIP BASE AND SIDES OF PLANTING HOLE TO 150mm INCORPORATING ADDITIVES AS REQUIRED. BACKFILL WITH IMPROVED SUBSOIL AS REQUIRED BELOW 300mm DEPTH FROM FINISHED SURFACE LEVELS. TOP WITH 300mm DEPTH TOPSOIL. FINISH PLANTING AREAS WITH 75mm DEPTH MULCH. PROVIDE MULCHED WATERING BASIN CAPABLE OF HOLDING 10l OF WATER TO ALL TREES.

MAINTENANCE

ALL PLANTING:
ALL PLANTING TO BE MAINTAINED FOR A MINIMUM PERIOD OF 52 WEEKS. REGULAR MAINTENANCE SHALL INCLUDE PRUNING, WEEDING, CLEANING AND REPLACEMENT OF ANY FAILED PLANTINGS. ALL PLANT MATERIAL TO BE SUPPLIED WITH ADEQUATE WATER TO MAXIMISE ESTABLISHMENT AND ONGOING HEALTH BY MEANS OF MANUAL WATERING OR INSTALLATION OF AN AUTOMATIC IRRIGATION SYSTEM.

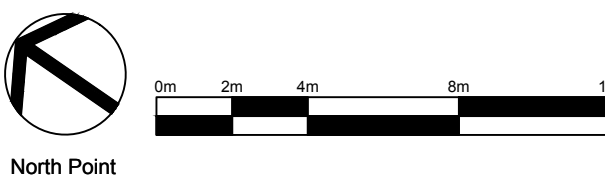
LEGEND

- EXISTING TREE TO BE RETAINED
- EXISTING TREE TO BE REMOVED
- PROPOSED EVERGREEN TREE PLANTING REFER TO LABELS & PLANT SCHEDULE
- PROPOSED DECIDUOUS TREE PLANTING REFER TO LABELS & PLANT SCHEDULE
- FEATURE PLANTING REFER TO LABELS & PLANT SCHEDULE
- PEDESTRIAN GRADE CONCRETE TO CIVIL SPEC WITH EXPOSED AGGREGATE FINISH
- VEHICULAR GRADE CONCRETE TO CIVIL ENGINEERING SPECIFICATION
- SUN PLANTING MIX REFER TO PLANT SCHEDULE
- SHADE PLANTING MIX REFER TO PLANT SCHEDULE
- UNDERSTOREY PLANTING MIX REFER TO PLANT SCHEDULE
- EXISTING PLANTING PROTECTED AND RETAINED
- TURF
- LARGE BOULDERS SET INTO GARDEN BEDS
- PROPOSED LEVELS
- EXISTING LEVELS RETAINED
- CONCRETE WALL ACTING AS RAM BARRIER TO STREET FRONTAGE
- MAIN ENTRY PATH & STAIRS (EXPOSED AGGREGATE CONCRETE)
- ACCESSIBLE (RAMPED) ENTRY PATH (EXPOSED AGGREGATE CONCRETE)
- SLOPED GARDEN BED WITH FEATURE BOULDERS
- REPLACEMENT TREE AND UNDERSTOREY PLANTING TO COURT HOUSE INTERFACE
- TURF (WITH STEEL EDGE) EMERGENCY EGRESS PATH FROM COURT HOUSE
- IN-SITU CONCRETE WALL / BENCH SEAT
- 500mm HIGH CONCRETE WALL
- BUILT-IN BBQ BENCH
- SEATING BENCH INTEGRATED WITH BUILDING FACADE AND GLAZING
- TABLES & CHAIRS FOR OUTDOOR DINING
- CLUMPING BAMBOO PLANTING AS GREEN OUTLOOK FROM INTERNAL VOID
- 1m WIDE DECOMPOSED GRANITE EGRESS PATH (WITH STEEL EDGE)
- SHADE TREES & UNDERSTOREY PLANTING TO CAR PARKING AND BUILDING ENTRIES
- CONCRETE UNIT PAVING TO BUILDING ENTRIES
- VEHICULAR GRADE CONCRETE UNIT PAVING
- CASCADING PLANTING AND SCREEN SHRUB PLANTING TO TOP OF RETAINING WALL

General Notes

- This drawing is the copyright of Group GSA Pty Ltd and may not be altered, reproduced or transmitted in any form or by any means in part or in whole without the written permission of Group GSA
- Drawings to be printed in colour.
- Do not scale drawings. Dimensions govern.
- All dimensions are in millimetres unless noted otherwise.
- All dimensions shall be verified on site before proceeding.
- Any areas indicated on this sheet are approximate and indicative only.

Issue	Reason for Issue/Change	Date	Chk
A	DA ISSUE	17.05.2018	AH



Client



Project Manager



Principal Design Consultant



Group GSA Pty Ltd ABN 76 002 113 779
Level 7, 80 William St East Sydney NSW
T +612 9361 4144 www.groupgsa.com

Project

TAREE POLICE STATION

Location

ALBERT ST, TAREE

Asset

TAREE POLICE STATION

Drawing Title

LANDSCAPE PLAN

Phase	Scale	Plot Date	Drawn	Chk
DA	@A1 - 1:200 @A3 - 1:400	16/05/2018	AH	AH
Group GSA Proj. No	Drawing No	Revision		
180023	TAR-LA-1000	A		